



Supported Independent Living in Belmont

Property ID: VIC1646

Vacancies: 1



Bedrooms:
5



Bathrooms:
2



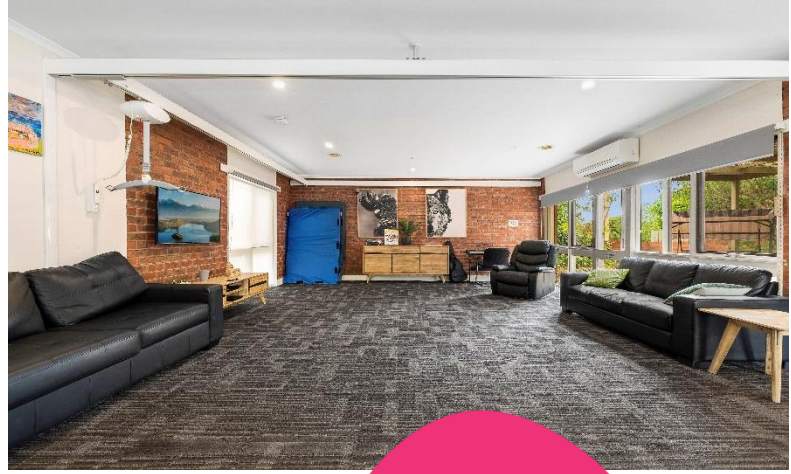
Property Owner:
Scope



**NDIS Funded
SDA Design Category:**
High Physical Support
(Bedroom 4 open to
Improved Liveability)



Support provided:
Seven days per week
with sleep over
support model



*Your
new home*

Spacious home with a large living space and renovated kitchen.

Features

- Recently renovated home.
- Large open plan kitchen, dining and living area.
- Automated doors.
- Undercover outdoor seating area perfect for relaxing or entertaining.
- Sleepover support provided seven days a week.

Current residents

- The current residents are all males and are aged between 25-55.
- They attend day programs and enjoy various activities such as cooking, music and supporting the Geelong football club.

Bedroom features

- Heating and cooling.
- Ceiling hoist.
- Bedroom 4 is open to Improved Liveability funding for the right new resident.

Local area

- Easy access to bus stops as well as nearby local shops and cafes.
- Close to several large parks, including Barwon Valley Park.
- Short drive to South Geelong train station and the Geelong Waterfront.

Interested in applying?

Before applying, make sure:

- The applicant is aged 18 years or over.
- The applicant has approved SDA eligibility and NDIA funding at the appropriate level.
- The applicant has the financial means to pay rent and utilities and is prepared to sign (or a representative to sign) a residential agreement.
- The Specialist Disability Accommodation (SDA) design category is High Physical Support.

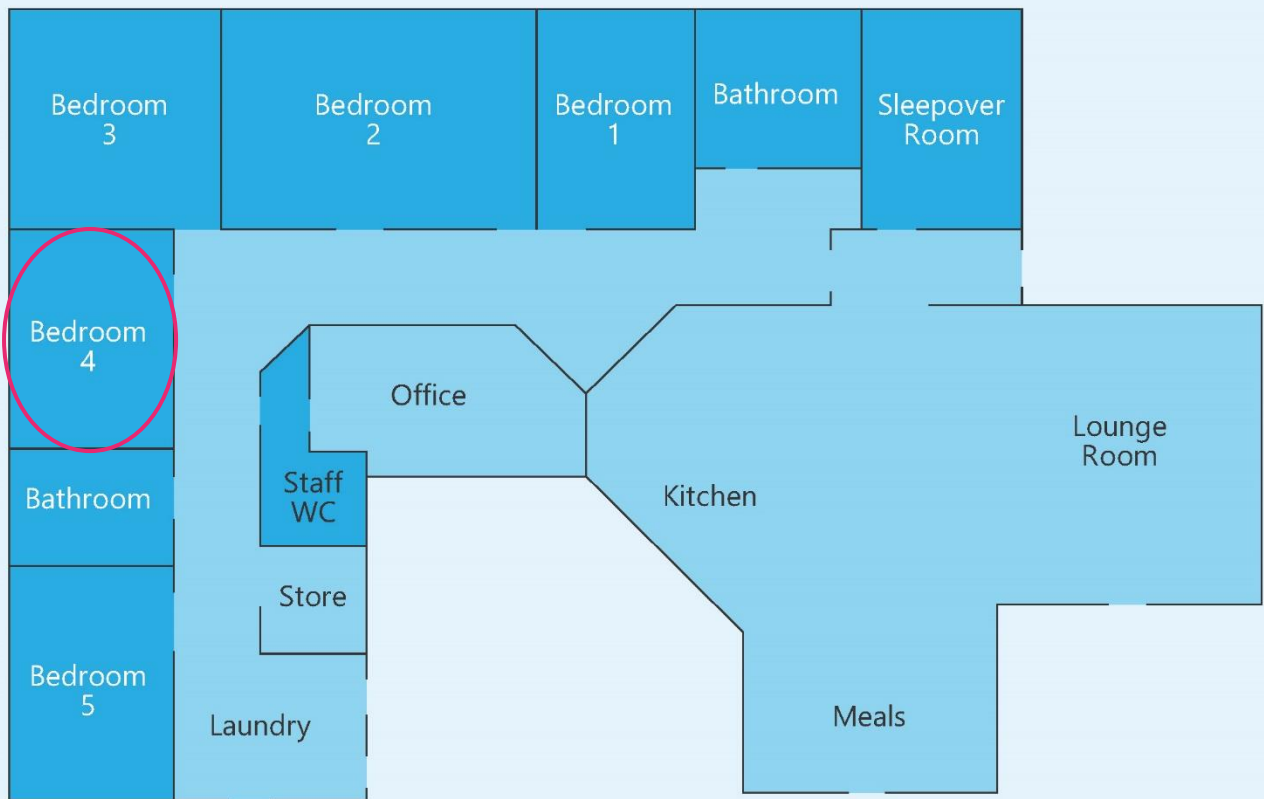
Find out how this can be your new home

To arrange a time to visit, or for more details contact us on:

1300 472 673

contact@scopeaust.org.au





Making an enquiry

1300 472 673

VacancyEnquiries@scopeaust.org.au