



# Supported Independent Living in Clayton

Property ID: 515

Vacancies: 1



**Bedrooms:**  
4



**Bathrooms:**  
2



**Property Owner:**  
Department of Families, Fairness and Housing (DFFH)



**NDIS Funded SDA Design Category:**  
High Physical Support



**Support provided:**  
Seven days per week with sleep over support model



*Your  
new home*

## Amazing location near Clayton station and Monash Medical Centre.

### Features

- Open plan kitchen, dining and living area.
- Undercover outdoor seating area perfect for relaxing or entertaining.
- Two separate living rooms.
- Wheelchair accessible.
- Property is owned by the Department of Families, Fairness & Housing (DFFH) and staff support is provided by Scope.
- Staff are trained to support people with epilepsy, dementia and asthma.

### Current residents

- The current residents are all female, and enjoy shopping, craft, cooking and watching football.
- They are aged between 60-80 years.

### Bedroom features

- Built-in robes.
- Air conditioning and heating.
- Ceiling hoist.

### Local area

- Only five minutes from Monash Medical Centre.
- Easy access to shops and cafes at Clayton Shopping Plaza.
- Two-minute drive from Clayton train station.
- Several local parks and reserves nearby.

### Interested in applying?

#### Before applying, make sure:

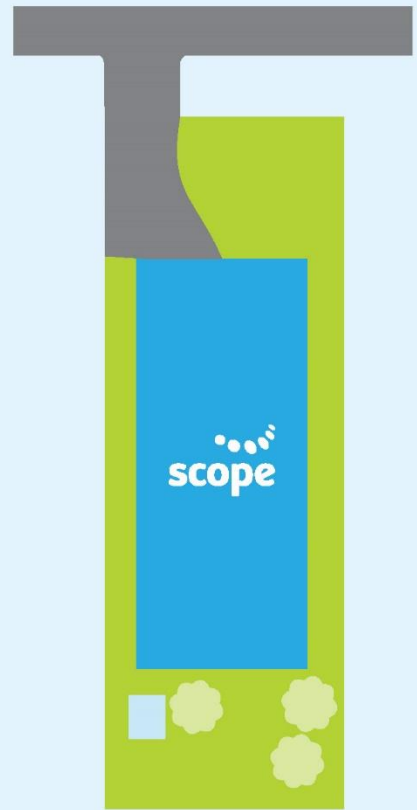
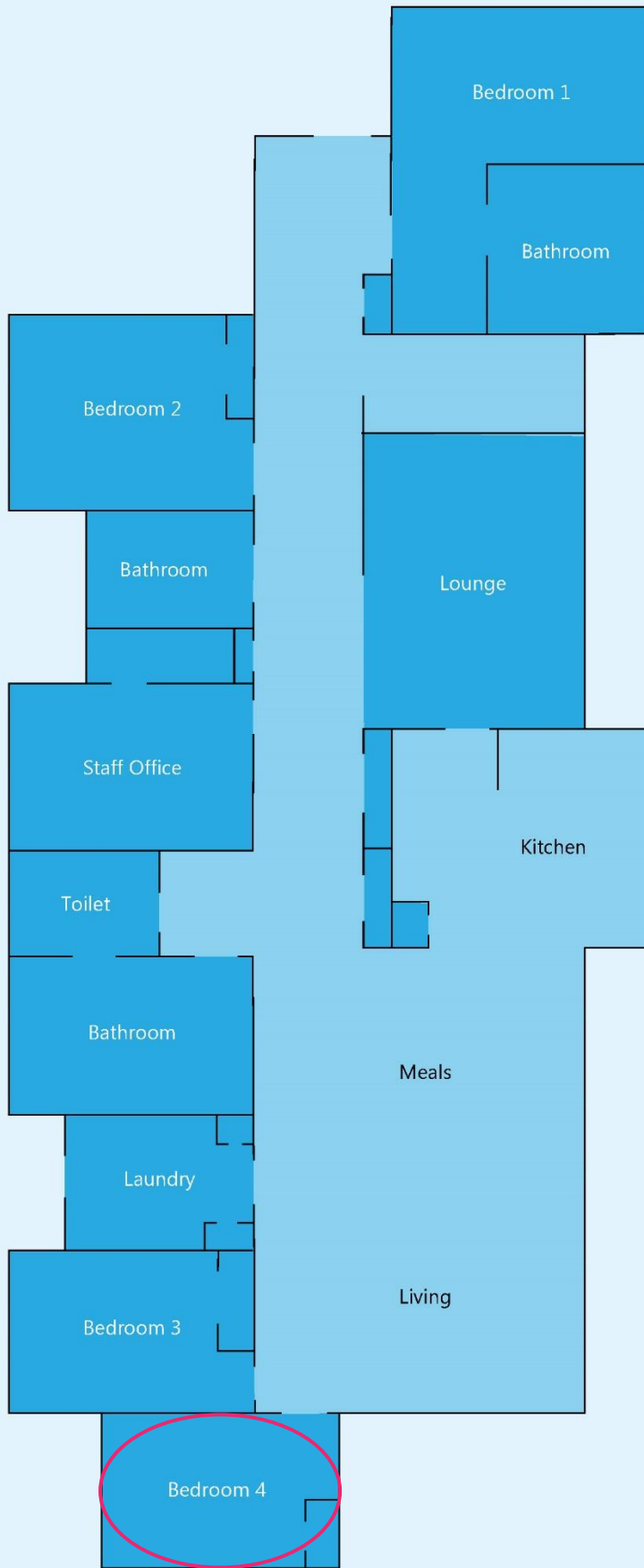
- The applicant is aged 18 years or over.
- The applicant has approved SDA eligibility and NDIA funding at the appropriate level.
- The applicant has the financial means to pay rent and utilities and is prepared to sign (or a representative to sign) a residential agreement.
- The Specialist Disability Accommodation (SDA) design category is High Physical Support.

### Find out how this can be your new home

To apply or to arrange an inspection, contact DFFH on:  
[southvct@dffh.vic.gov.au](mailto:southvct@dffh.vic.gov.au)  
[www.dffh.vic.gov.au](http://www.dffh.vic.gov.au)

For SIL enquiries or for more details contact Scope on:  
1300 472 673  
[contact@scopeaust.org.au](mailto:contact@scopeaust.org.au)





**Making an enquiry**

1300 472 673

[VacancyEnquiries@scopeaust.org.au](mailto:VacancyEnquiries@scopeaust.org.au)