



# Supported Independent Living in Kew

Property ID: 686

Vacancies: 1



**Bedrooms:**  
5



**Bathrooms:**  
2



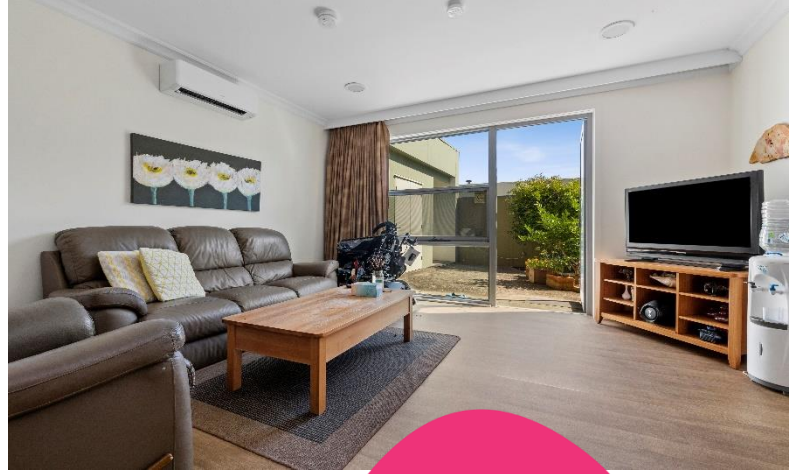
**Property Owner:**  
Department of Families, Fairness and Housing (DFFH)



**NDIS Funded SDA Design Category:**  
Robust



**Support provided:**  
Seven days per week with active night support



*Your  
new home*

## Beautiful home with two spacious living areas to relax in.

### Features

- This home is suitable for a person with high physical support needs.
- Wide corridors and open plan design for ease of movement.
- Two comfortable living rooms to relax in.
- Lovely undercover courtyard seating area with greenery and a swinging chair.
- Property is owned by the Department of Families, Fairness & Housing (DFFH) and staff support is provided by Scope.

### Current residents

- Three female residents and one male resident with ages between 38-75 years old.
- They enjoy eating out, visiting cafes, shopping, arts and craft, puzzles and music.
- The ideal new housemate will be a peaceful person who respects others' personal space, and of a similar age range to the current residents (38-75 years old).

### Bedroom features

- Built-in robes.
- Heating and cooling.
- Ceiling hoist.

### Local area

- Easy access to public transport with trams and buses within walking distance.
- Close to shops and cafes, including a bustling shopping strip on Kew Junction.

- Beautiful parks and places to enjoy nature nearby, such as Bellbird Park and Alexandra Gardens.

### Interested in applying?

#### Before applying, make sure:

- The applicant is aged 18 years or over.
- The applicant has approved Specialist Disability Accommodation (SDA) eligibility and NDIS funding at the appropriate level.
- The applicant has the financial means to pay rent and utilities and is prepared to sign (or a representative to sign) a residential agreement.
- The SDA building type is Group Home.
- The SDA design category is Robust.

### Find out how this can be your new home

To apply or to arrange an inspection, contact DFFH on:

[eastvct@dffh.vic.gov.au](mailto:eastvct@dffh.vic.gov.au)

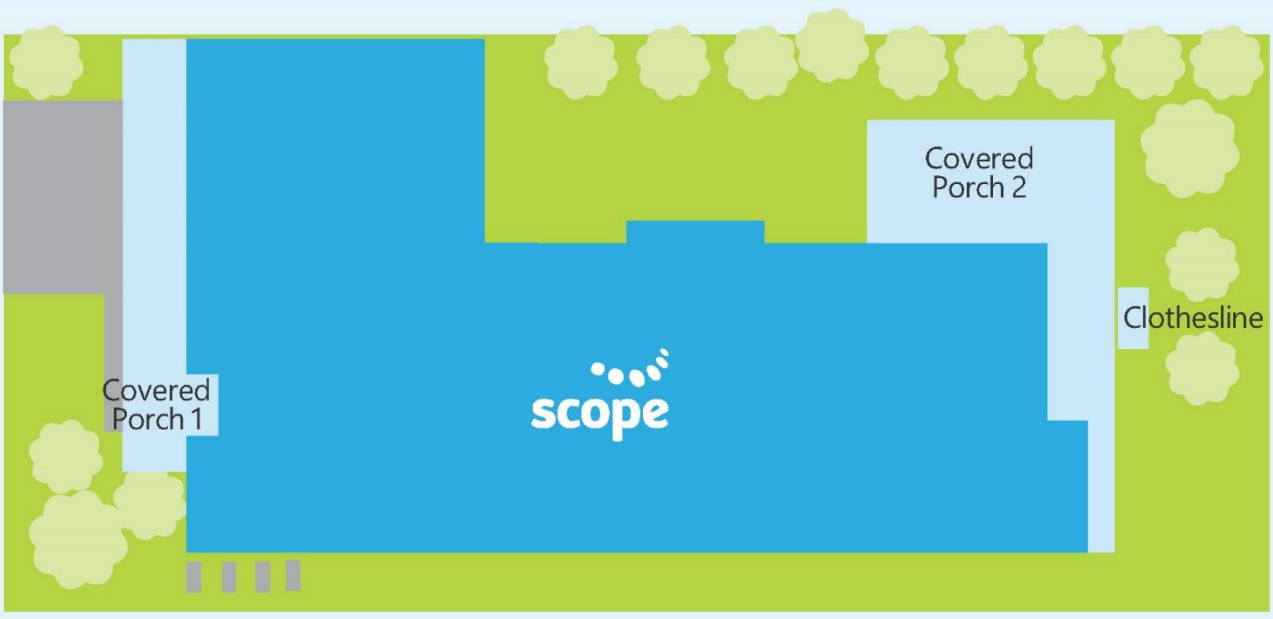
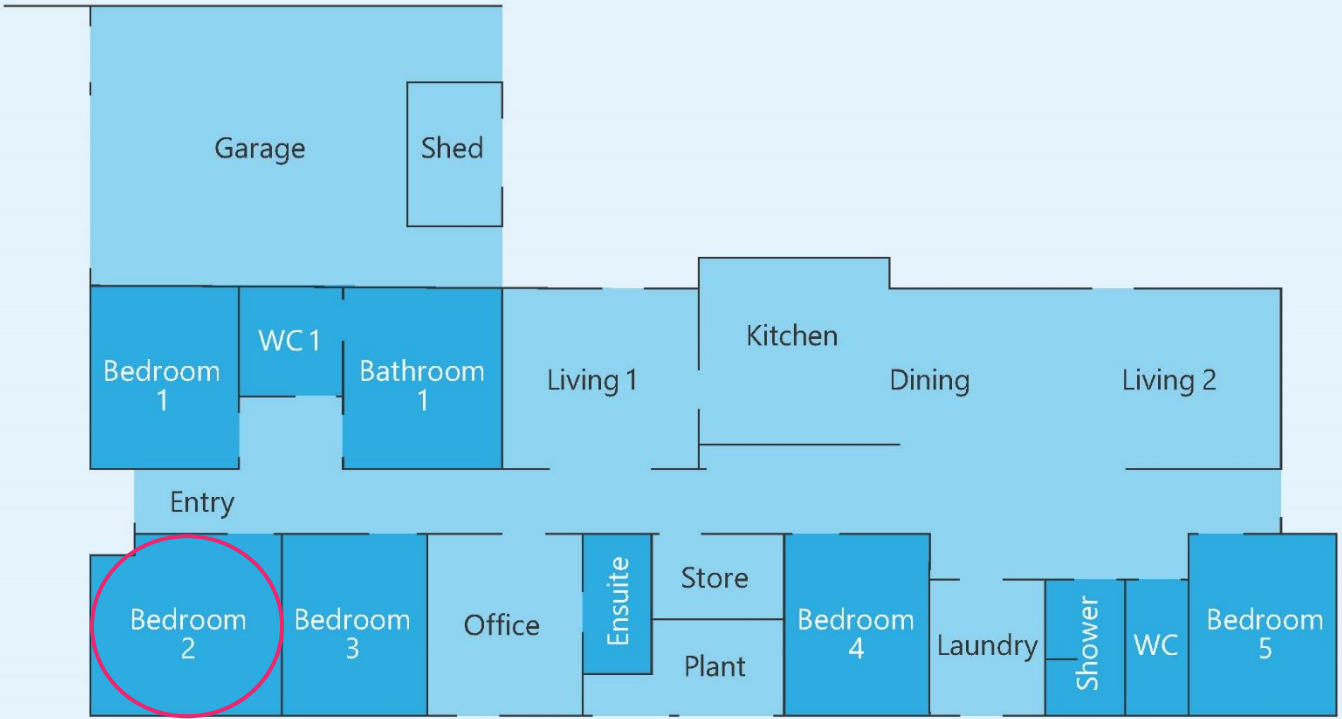
[www.dffh.vic.gov.au](http://www.dffh.vic.gov.au)

For SIL enquiries or for more details contact Scope on:

1300 472 673

[contact@scopeaust.org.au](mailto:contact@scopeaust.org.au)





**Making an enquiry**

1300 472 673

[contact@scopeaust.org.au](mailto:contact@scopeaust.org.au)