



# Supported Independent Living in Kew

Property ID: 700

Vacancies: 1



**Bedrooms:**  
5



**Bathrooms:**  
2



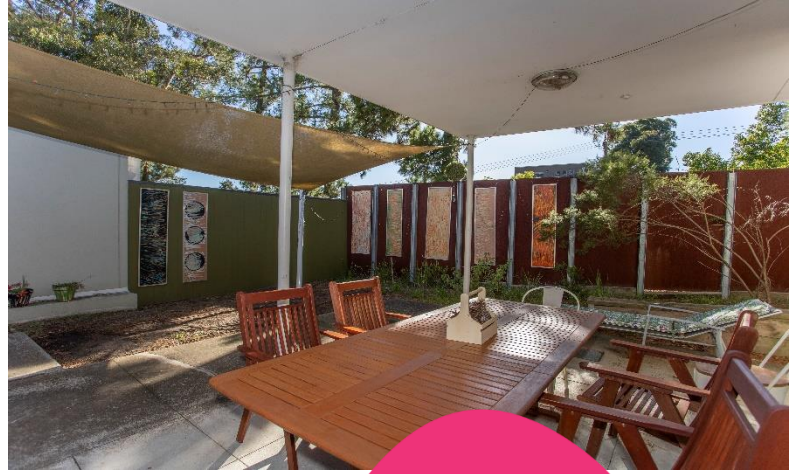
**Property Owner:**  
Department of Families, Fairness and Housing (DFFH)



**NDIS Funded  
SDA Design Category:**  
Fully Accessible



**Support provided:**  
Seven days per week  
with active night support



*Your  
new home*

## Spacious house in a leafy suburb, with a beautiful outdoor seating area.

### Features

- Wheelchair accessible.
- Open plan kitchen, dining and living area.
- Undercover outdoor seating area perfect for relaxing or entertaining.
- Two separate living rooms.
- Two bathrooms and two separate toilets (including an overhead hoist in the main bathroom).
- Property is owned by the Department of Families, Fairness & Housing (DFFH) and staff support is provided by Scope.

### Current residents

- Four male residents between the ages of 50-70.
- Their interests and activities include basketball, eating out, shopping, gardening, painting and spending time with family.

### Bedroom features

- Built-in robes.
- Heating and cooling.

### Local area

- Close to High Street Kew shopping hub.
- Accessible from Eastern Freeway.
- Trams and buses are within walking distance.

### Interested in applying?

Before applying, make sure:

- The applicant is aged 18 years or over.
- The applicant has approved SDA eligibility and NDIA funding at the appropriate level.
- The applicant has the financial means to pay rent and utilities and is prepared to sign (or a representative to sign) a residential agreement.
- The Specialist Disability Accommodation (SDA) design category is Fully Accessible.

### Find out how this can be your new home

To apply or to arrange an inspection, contact DFFH on:

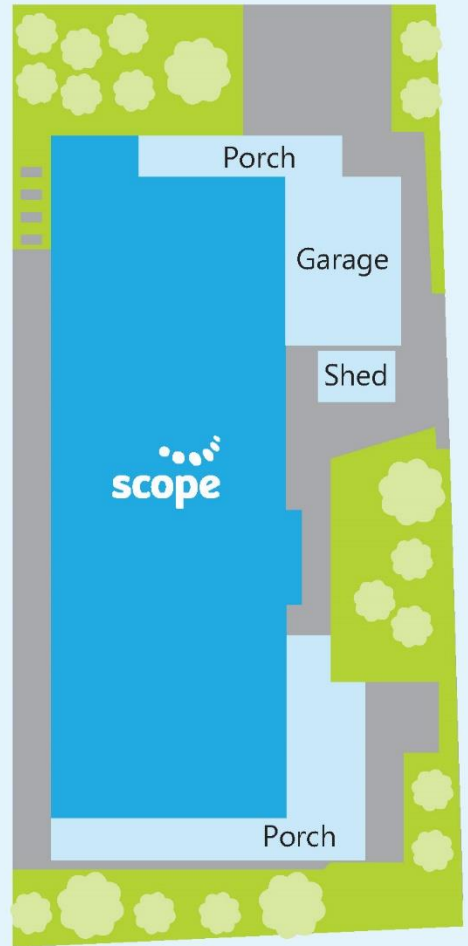
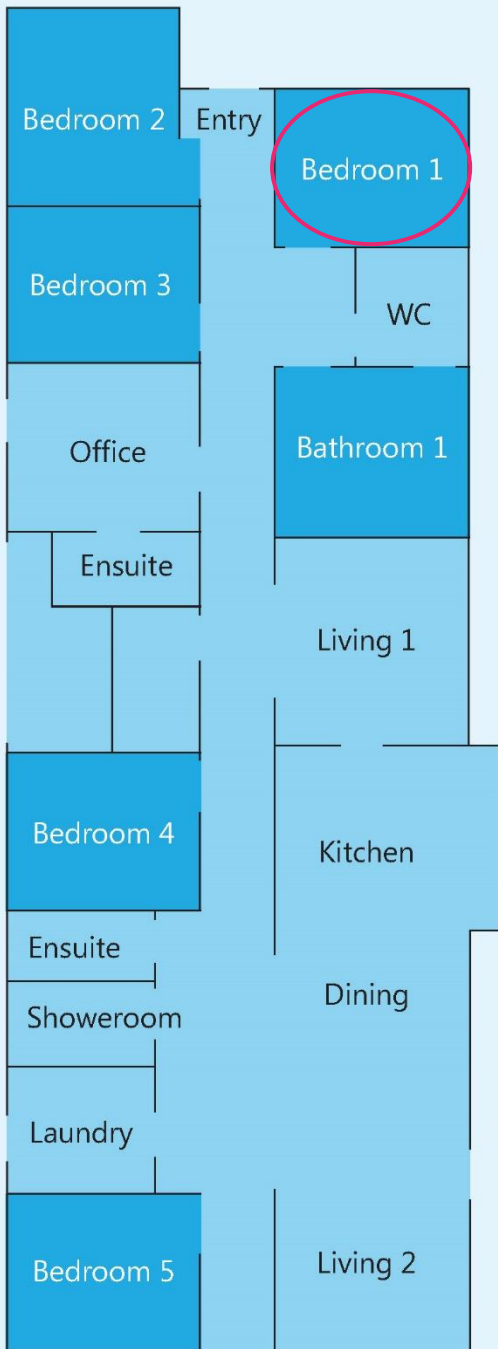
[eastvct@dffh.vic.gov.au](mailto:eastvct@dffh.vic.gov.au)

[www.dffh.vic.gov.au](http://www.dffh.vic.gov.au)

For SIL enquiries or for more details contact Scope on:

1300 472 673

[contact@scopeaust.org.au](mailto:contact@scopeaust.org.au)



**Making an enquiry**

1300 472 673

[VacancyEnquiries@scopeaust.org.au](mailto:VacancyEnquiries@scopeaust.org.au)