



Supported Independent Living in Mrytleford

Property ID: VIC838-U2

Vacancies: 1



Bedrooms:
2



Bathrooms:
1



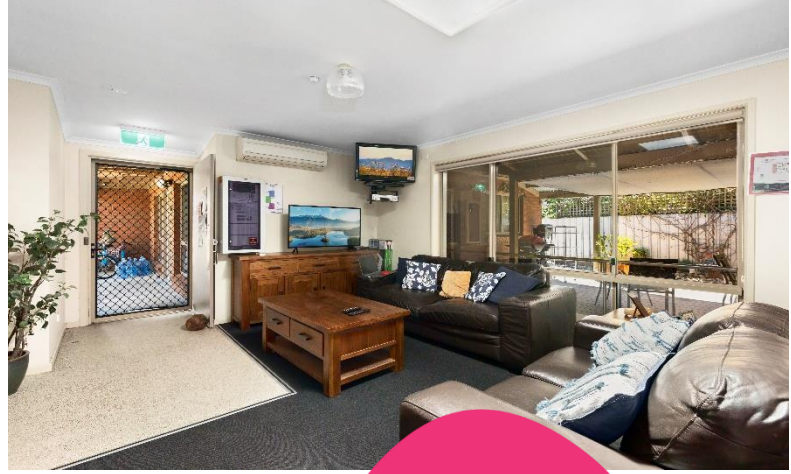
Property Owner:
Housing Choices
Australia



**NDIS Funded
SDA Design Category:**
Basic



Support provided:
Seven days per week
with sleep over
support model



*Your
new home*

Enjoy a social, active and independent lifestyle in a comfortable unit.

Features

- Vacancy in Unit 2 (total of 3 units on the block).
- Open plan kitchen, dining and living area.
- Undercover outdoor seating area perfect for relaxing or entertaining.
- Broadband internet access available.
- Property is owned by Housing Choices Australia and staff support is provided by Scope.

Current residents

- The current resident in Unit 2 is a social and independent man in his 20s, with interests in music, technology, and social media.
- The residents in Units 1-3 are a group of active, social men who enjoy sports, playing cards and being out in the community.
- The ideal new housemate will be a resilient, easy-going person who has a good level of self-awareness and enjoys social activities.

Bedroom features

- Built-in robes.
- Heating and cooling.

Local area

- Convenient access to Alpine Health Hospital.
- Short drive to local restaurants, cafes, and supermarket.
- Several scenic parks, sporting reserves and walking tracks nearby.

Interested in applying?

Before applying, make sure:

- The applicant is aged 18 years or over.
- The applicant has approved SDA eligibility and NDIA funding at the appropriate level.
- The applicant has the financial means to pay rent and utilities and is prepared to sign (or a representative to sign) a residential agreement.
- The Specialist Disability Accommodation (SDA) design category is Basic.

Find out how this can be your new home

To apply or to arrange an inspection, contact Housing Choices Australia on:
sda@hcau.org.au
1300 312 447 (ask for the Specialist Housing Group)

For SIL enquiries or for more details contact Scope on:
1300 472 673
contact@scopeaust.org.au





Making an enquiry

1300 472 673

VacancyEnquiries@scopeaust.org.au