



# Supported Independent Living in The Basin

Property ID: 684  
Vacancies: 1



**Bedrooms:**  
5



**Bathrooms:**  
1



**Property Owner:**  
Department of  
Families, Fairness  
and Housing (DFFH)



**NDIS Funded  
SDA Design Category:**  
Fully Accessible



**Support provided:**  
7 days per week  
with a sleeperover  
support model



## Spacious home with two large living areas and an outdoor seating area.

*Your  
new home*

### Features

- Open plan kitchen, dining and living area.
- Two separate large living rooms.
- Inviting alfresco area.
- This property is owned by Department of Families, Fairness and Housing (DFFH) and staff support is provided by Scope.

### Current residents

- The current residents are males aged in their 20s.
- They enjoy a settled environment and like to have their own space as well as enjoying a variety of social activities with the local community.

### Bedroom features

- Built in robes.
- Air-conditioning and heating.

### Local area

- Easy access to public transport via local bus route.
- Connecting roads Mountain Highway and Forest Road surrounds the house making travel to neighbouring suburbs easy.
- Plenty of recreational opportunities close by including local parks, public gardens, restaurants, cafes and shops.

### Interested in applying?

**Before applying, make sure:**

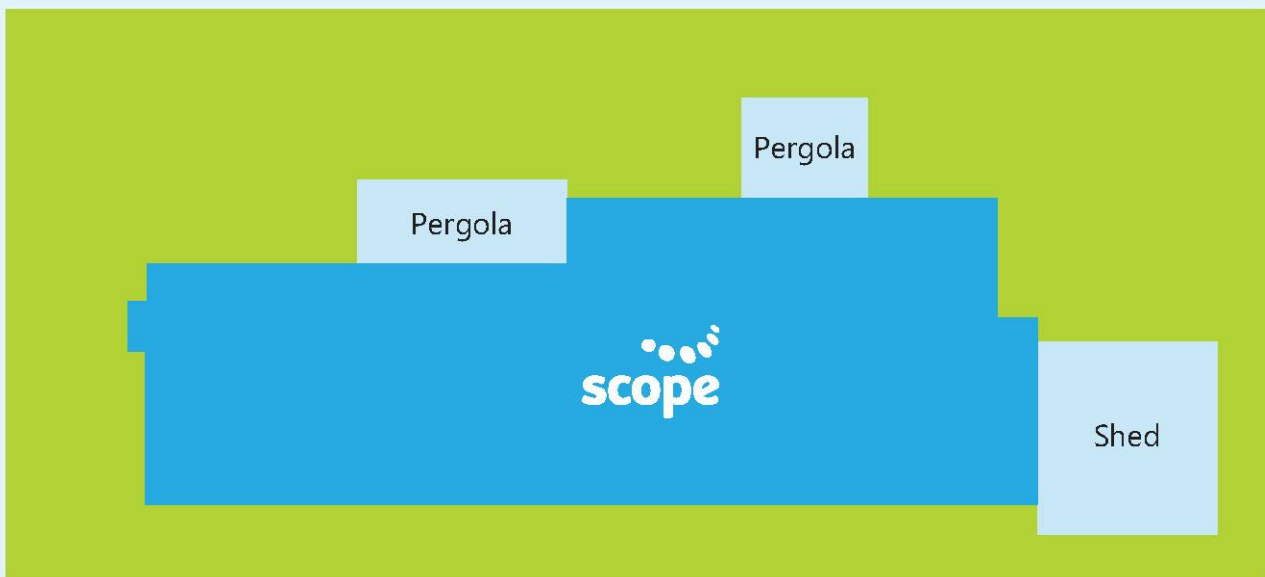
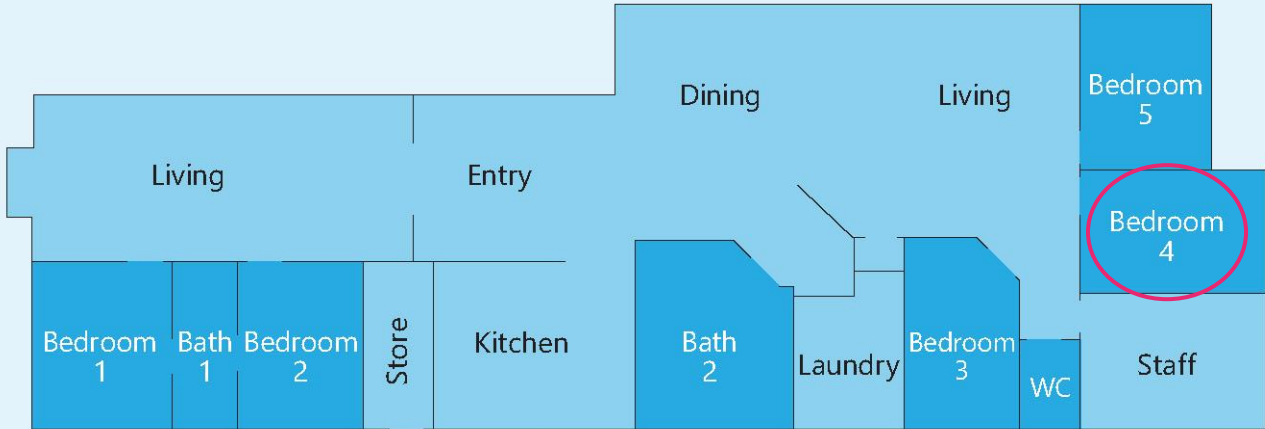
- The applicant is aged 18 years or over.
- The applicant has approved SDA eligibility and NDIA funding at the appropriate level.
- The applicant has the financial means to pay rent and utilities and is prepared to sign (or a representative to sign) a residential agreement.
- Specialist Disability Accommodation (SDA) category for this house is Fully Accessible.

### Find out how this can be your new home

To apply or to arrange an inspection, contact DFFH on:  
[eastvct@dffh.vic.gov.au](mailto:eastvct@dffh.vic.gov.au)  
[www.dffh.vic.gov.au](http://www.dffh.vic.gov.au)

For SIL enquiries or for more details contact Scope on:  
1300 472 673  
[contact@scopeaust.org.au](mailto:contact@scopeaust.org.au)





**Making an enquiry**

1300 472 673

[VacancyEnquiries@scopeaust.org.au](mailto:VacancyEnquiries@scopeaust.org.au)